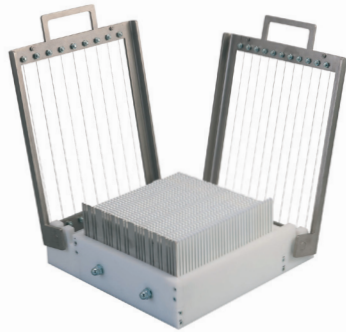


ENSURING A CLEAN CUT WITHOUT HAVING TO MOVE THE PRODUCT DURING CUTTING



SUPPLIED WITH:

- 2 cutting arms of 22 mm.
- 1 stainless steel tray.
- 1 spatula and wire tensioning keys.
- 15 and 30 mm cutting arms of the mini model can be fitted to this model.

MINI DOUBLE-ARM GUITAR

Item #	
263550	



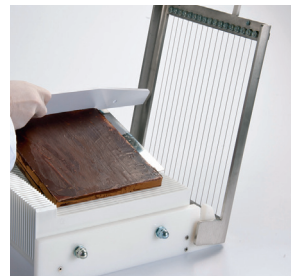
- Easily interchangeable stainless steel cutting arms.
- Polyethylene and ABS base.
- Supplied with one cutting arm 3/4" spaces.
- 1 stainless steel turning plate and clamp key for wires.
- Optional cutting arms of 1/2" and 1 1/8" spacing available.

MINI GUITAR CANDY SLICER

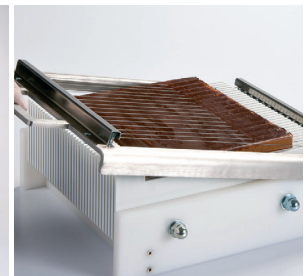
Perfect for small production needs in restaurants, training colleges, pastry shops.

Used to cut strips, squares or rectangles of ganache, fruit jellies, cream desserts, etc.

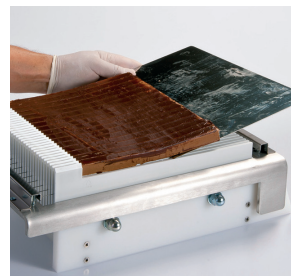
Item #	
263530	Base with cutting arm
263535	Optional Cutting Arm
263537	Optional Cutting Arm
263512	Cutting Wire
	Dimensions of the base":
	9 1/2" x 10"
	Overall dimensions:
	17 1/2" x 13 1/8" x 5 1/2" high



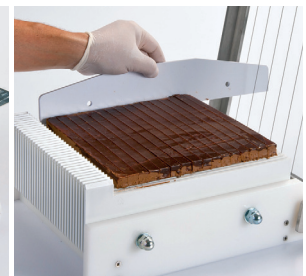
1 | Place.



2 | Cut.



3 | Retrieve.



4 | Turn and adjust.



5 | Cut.

